

Turtle-y Awesome Fact Sheet

As seen on Deep Sea Learning with Georgia Aquarium:

<https://www.youtube.com/user/>

Key Terms:

- **Aquatic turtle:** turtle that spends most of its time in the water
- **Terrestrial turtle:** a turtle that spends most its time on land
- **Carapace:** the top portion of the shell
- **Scute:** a tough, plate on the shell of the turtle

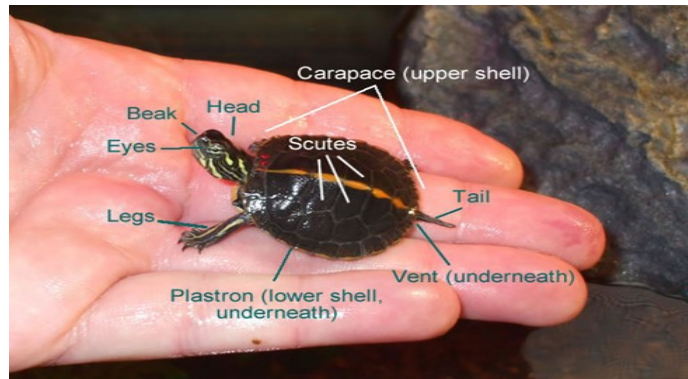


What are some threats to wild turtles?

- Natural threats like **sea birds and crabs** for hatchlings, and **sharks** at adulthood are common.
- Human-caused threats such as **trawling fish nets, plastic pollution, and light pollution** are also major threats.

Lets learn about Turtles!

- Part of the **reptile family**, turtles can have special **plates and/or scales**.
- People will think of shells when thinking of turtles and how it protects them!
- Most have **hard shells** which are fused with their backbones, having **carapace** and plastron covered in **scutes** made of keratin (like our hair & nails).



What do Turtles like to eat?

- Because turtles do not have teeth, we must look at the formation of their jaws and mouth to determine the diet.
- Leatherback turtles have more of a sharp inner jaw that allow them to tear apart jellies.
- While other turtles like the loggerhead have strong, large jaws that allow them to break into hard-shelled prey.





EDUCATION

GEORGIA AQUARIUM

